

**5 lane pool
Floor plans**

Scale: 1:200 @ A3
Notes:
 This drawing is developed from Sport England's publication Affordable Community Swimming Pools and must be read in conjunction with the document.

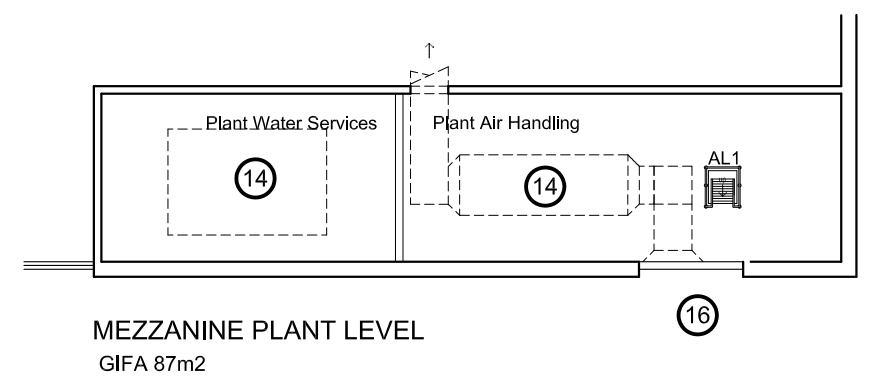
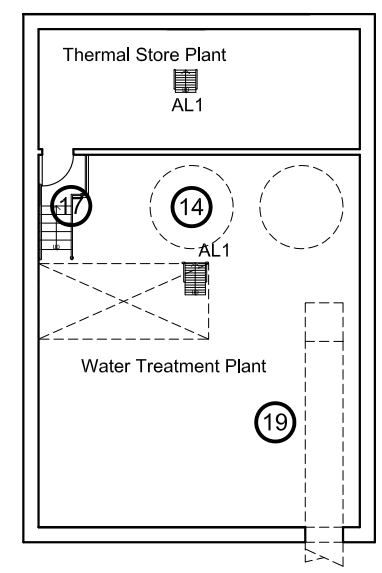
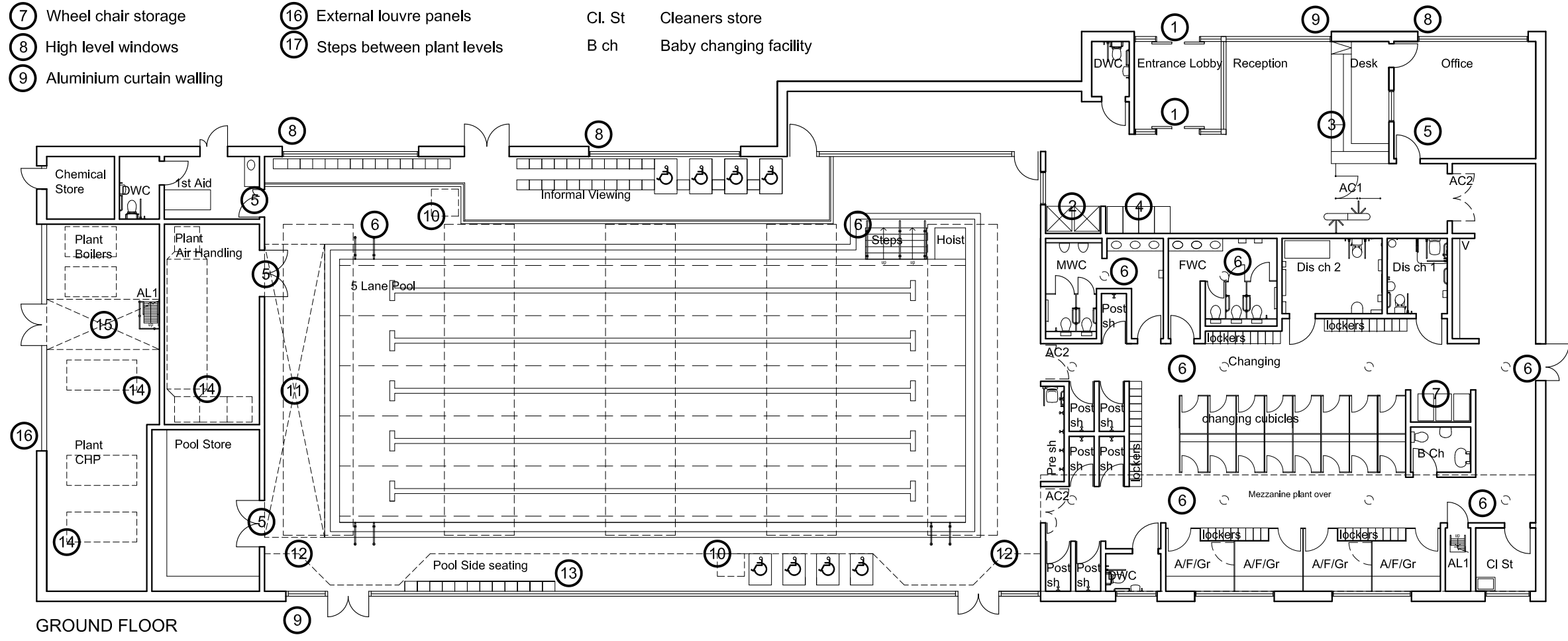
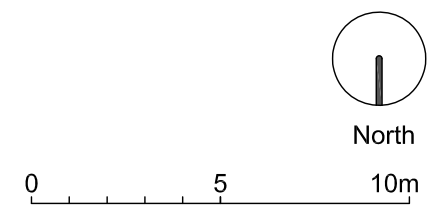
DO NOT SCALE FROM THIS DRAWING

[Click here for 'Design and Cost Guidance'](#)
[Click here for 'User Guide'](#)



- KEY**
- ① Automatic doors
 - ② Vending machines
 - ③ Area of low level counter
 - ④ Buggy park
 - ⑤ Staff only door
 - ⑥ Sun tubes to changing, rooflights to pool hall
 - ⑦ Wheel chair storage
 - ⑧ High level windows
 - ⑨ Aluminium curtain walling
 - ⑩ Possible life guard position
 - ⑪ Balance tank under
 - ⑫ Extent of pool surround to meet BSEN 15288 Part 1
 - ⑬ Window plinth seating
 - ⑭ Plant equipment
 - ⑮ Removable section of floor
 - ⑯ External louvre panels
 - ⑰ Steps between plant levels

- ABBREVIATIONS**
- FWC Female WC
 - MWC Male WC
 - DWC Unisex accessible WC 2.2 X 1.5m
 - A/F/Gr Accessible / family / group changing cubicle minimum 2.0 X 2.6m
 - Dis. ch 1 Unisex accessible changing place facility with WC and shower 2.5 X 2.4
 - Dis. ch 2 Unisex accessible changing place facility with WC and shower 4.0 X 3.0
 - Cl. St Cleaners store
 - B ch Baby changing facility
 - Post. sh Post swim shower
 - Pre. sh Pre swim shower
 - AC1 Access control turnstile
 - AC2 Door or gate controlled access of pool when out of hours. Hold open when pool is in use
 - V Vanity
 - AL1 Access ladder to high level plant area

North
0 5 10m

5 lane pool Sections

Scale: 1:200 @ A3
Notes:
 This drawing is developed from Sport England's publication Affordable Community Swimming Pools and must be read in conjunction with the document.

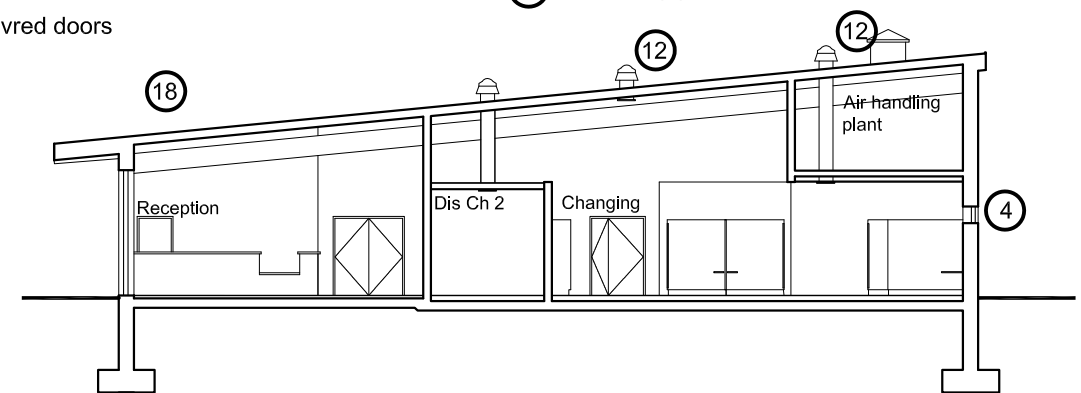
DO NOT SCALE FROM THIS DRAWING

[Click here for 'Design and Cost Guidance'](#)
[Click here for 'User Guide'](#)

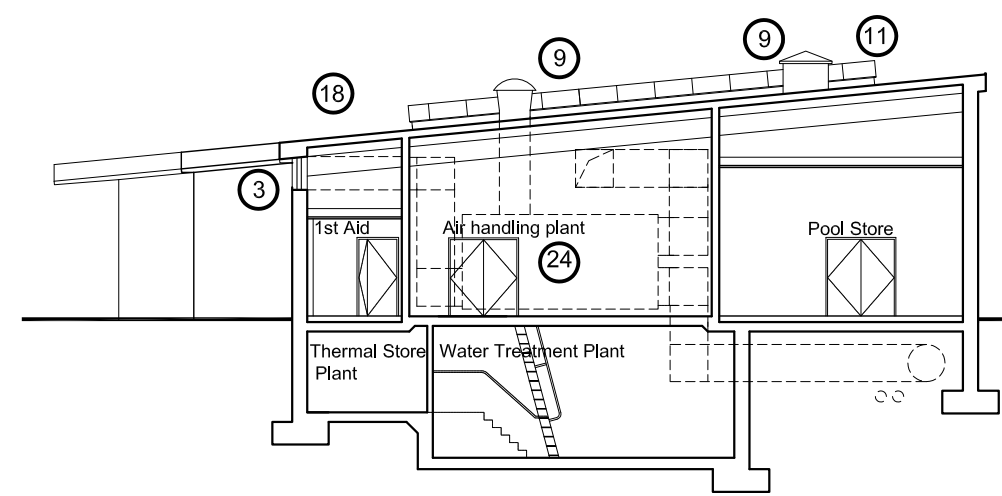


KEY

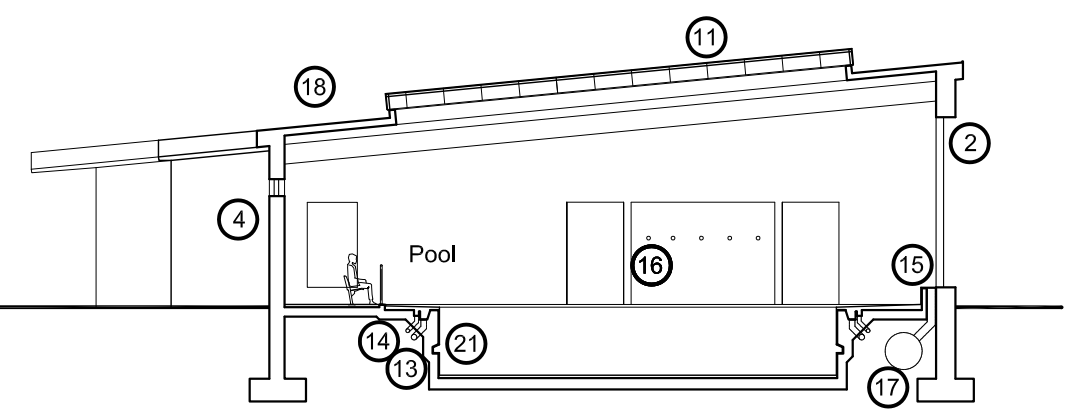
- | | | | |
|---|---|---|--------------------------|
| ① External wall - outer leaf dependent on site conditions e.g facing brick, stone, render or rain screen system | ⑧ Building signage (possibly illuminated) | ⑭ Foul drainage from pool surround | ⑲ Easy steps to water |
| ② Aluminium curtain walling | ⑨ Roof cowl for exhaust air from plant equipment | ⑮ Plinth seating | ⑳ Recessed pool steps |
| ③ External louvre panels | ⑩ Plant equipment flue to terminate 3m above roof level | ⑯ Pre-swim showers | ㉑ Rest ledge |
| ④ High level windows | ⑪ Low rise barrelvault roof light | ⑰ Supply ductwork under pool surround | ㉒ Balance tank |
| ⑤ Automatic entrance doors | ⑫ Sun tubes | ⑱ Roof finish dependent on site conditions e.g. standing seam or single ply systems | ㉓ Internal glazed screen |
| ⑥ Metal doors | ⑬ Filtration pipework | | ㉔ Plant equipment |
| ⑦ Louvred doors | | | |



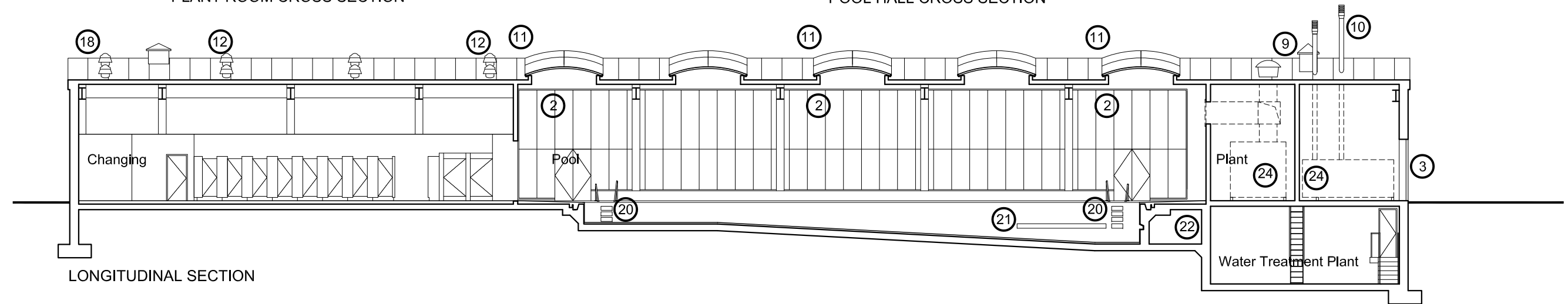
CHANGING ROOM CROSS SECTION



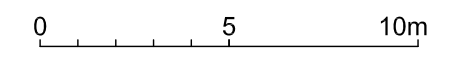
PLANT ROOM CROSS SECTION



POOL HALL CROSS SECTION



LONGITUDINAL SECTION



**5 lane pool
Elevations**

Scale: 1:200 @ A3

Notes:
This drawing is developed from Sport England's publication Affordable Community Swimming Pools and must be read in conjunction with the document.

DO NOT SCALE FROM THIS DRAWING

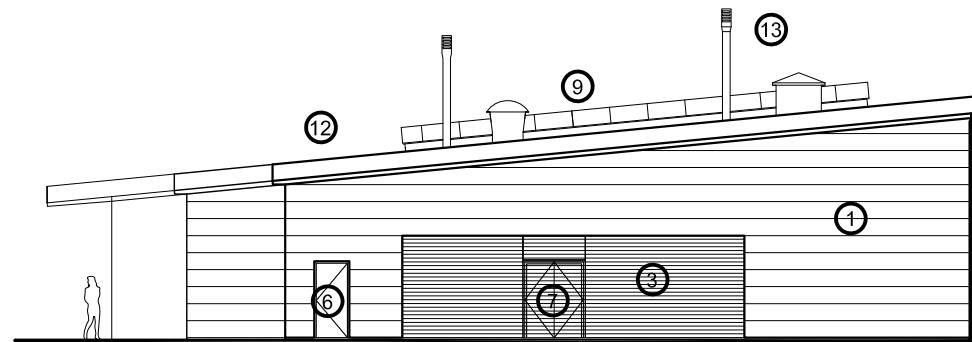
[Click here for 'Design and Cost Guidance'](#)

[Click here for 'User Guide'](#)

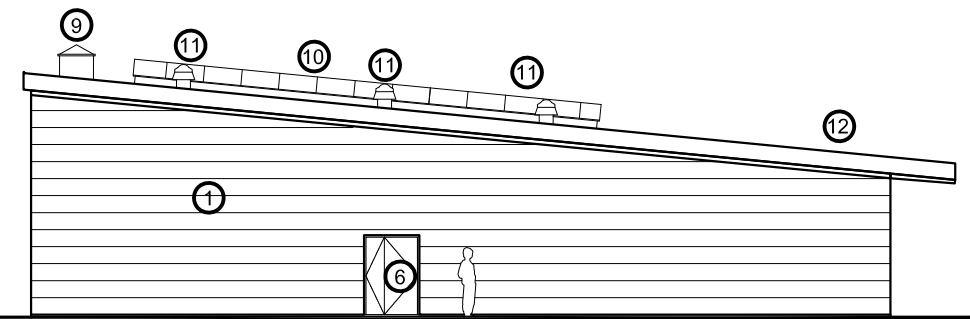


KEY

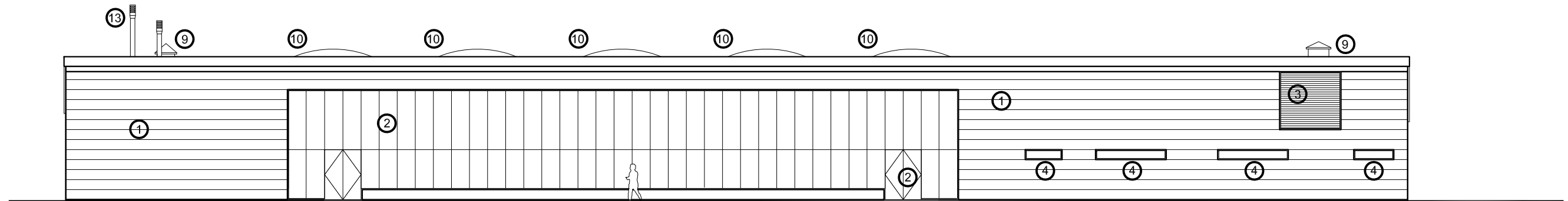
- | | | |
|---|--|---|
| ① External wall - outer leaf dependant on site conditions e.g. facing brick, stone render or a rain screen system | ⑤ Automatic entrance doors | ⑩ Low rise barrelvault roof light |
| ② Aluminium curtain walling | ⑥ Metal doors | ⑪ Sun tubes |
| ③ External louvre panels | ⑦ Louvred doors | ⑫ Roof finish dependent on site conditions e.g. standing seam or single ply systems |
| ④ High level windows | ⑧ Building signage (possibly illuminated) | ⑬ Plant equipment flue to terminate 3m above roof level |
| | ⑨ Roof cowl for exhaust air from plant equipment | |



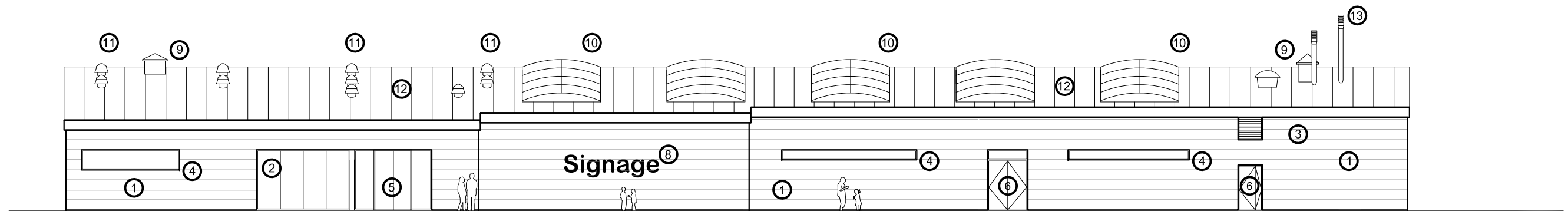
EAST ELEVATION



WEST ELEVATION



NORTH ELEVATION



SOUTH ELEVATION

0 5 10m