

**4 lane pool  
Floor plans**

**Scale: 1:200 @ A3**  
**Notes:**  
 This drawing is developed from Sport England's publication Affordable Community Swimming Pools and must be read in conjunction with the document.  
 DO NOT SCALE FROM THIS DRAWING

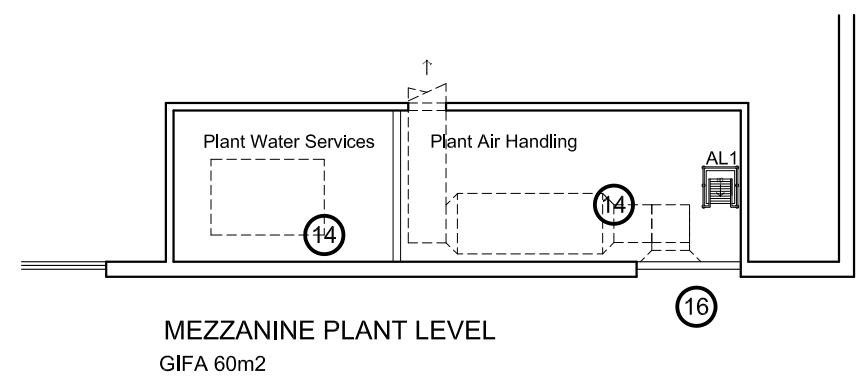
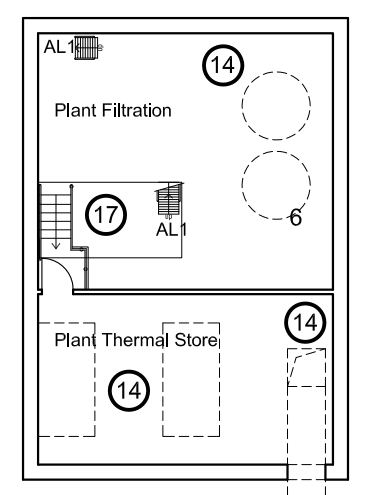
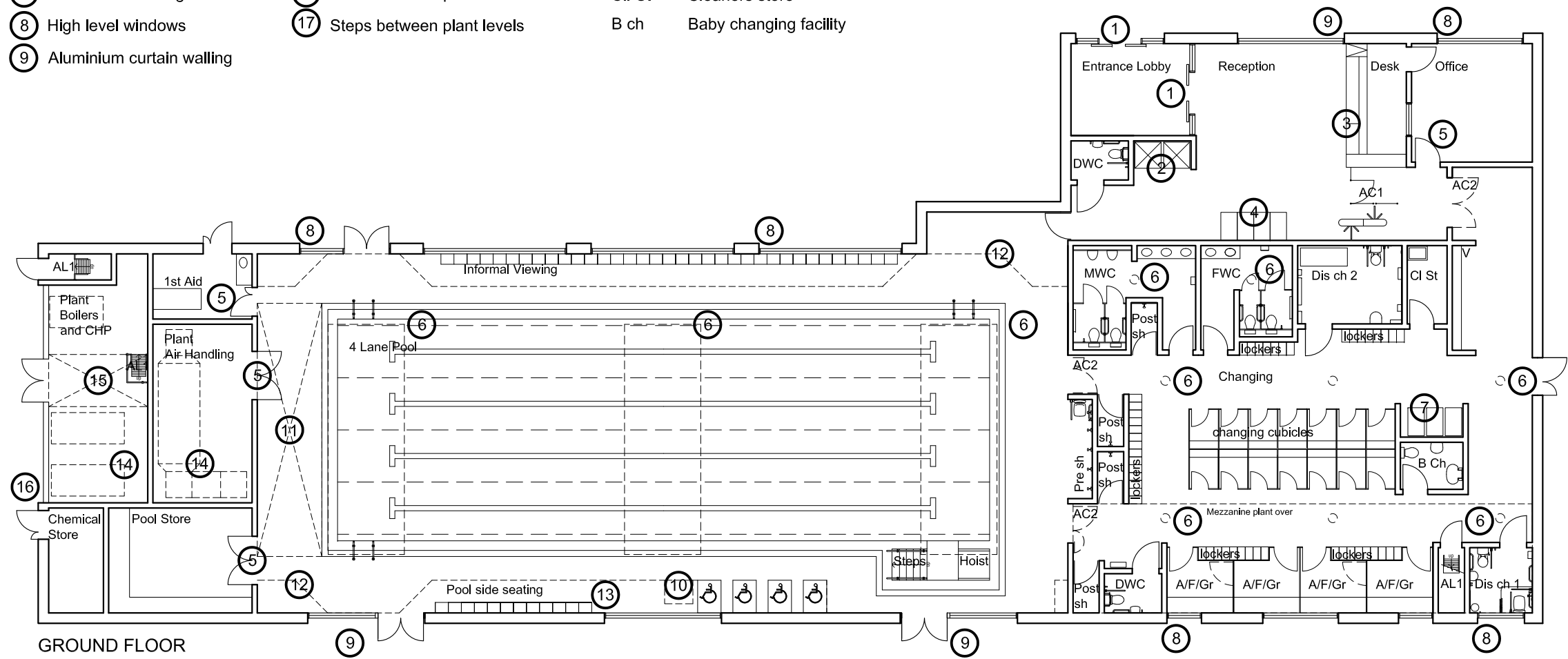
[Click here for 'Design and Cost Guidance'](#)  
[Click here for 'User Guide'](#)

**KEY**

- |  |   |
|--|---|
| ① Automatic doors                                | ⑩ Possible life guard position                      |
| ② Vending machines                               | ⑪ Balance tank under                                |
| ③ Area of low level counter                      | ⑫ Extent of pool surround to meet BSEN 15288 Part 1 |
| ④ Buggy park                                     | ⑬ Window plinth seating                             |
| ⑤ Staff only door                                | ⑭ Plant equipment                                   |
| ⑥ Sun tubes to changing, rooflights to pool hall | ⑮ Removable section of floor                        |
| ⑦ Wheel chair storage                            | ⑯ External louvre panels                            |
| ⑧ High level windows                             | ⑰ Steps between plant levels                        |
| ⑨ Aluminium curtain walling                      |   |

**ABBREVIATIONS**

- |           |  |          |   |
|-----------|--|----------|---|
| FWC       | Female WC  | Post. sh | Post swim shower  |
| MWC       | Male WC  | Pre. sh  | Pre swim shower   |
| DWC       | Unisex accessible WC 2.2 X 1.5m  | AC1      | Access control turnstile  |
| A/F/Gr    | Accessible / family / group changing cubicle minimum 2.0 X 2.6m        | AC2      | Door or gate controlled access of pool when out of hours. Hold open when pool is in use |
| Dis. ch 1 | Unisex accessible changing place facility with WC and shower 2.5 X 2.4 | V        | Vanity  |
| Dis. ch 2 | Unisex accessible changing place facility with WC and shower 4.0 X 3.0 | AL1      | Access ladder to high level plant area  |
| Cl. St    | Cleaners store   |          |   |
| B ch      | Baby changing facility   |          |   |



North  
  
 0 5 10m

**4 lane pool Sections**

**Scale: 1:200 @ A3**

**Notes:**  
This drawing is developed from Sport England's publication Affordable Community Swimming Pools and must be read in conjunction with the document.

DO NOT SCALE FROM THIS DRAWING

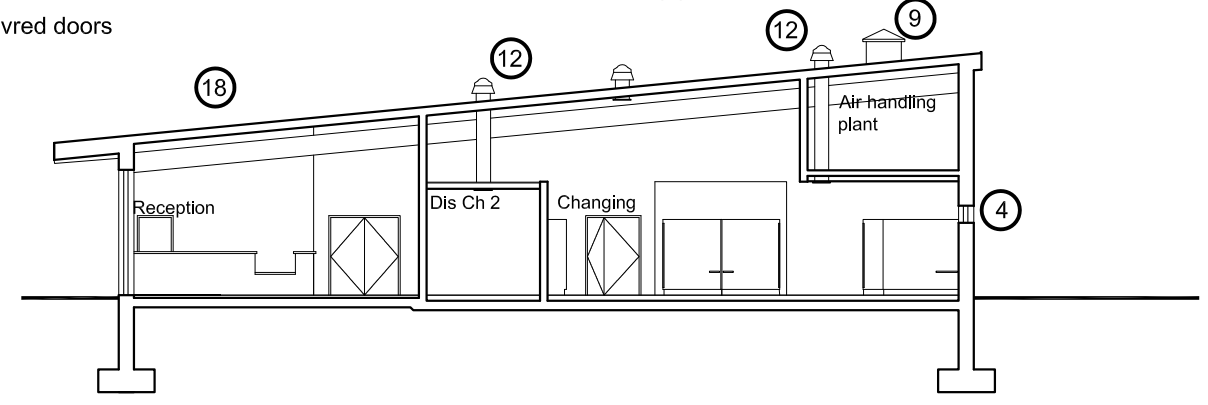
[Click here for 'Design and Cost Guidance'](#)

[Click here for 'User Guide'](#)

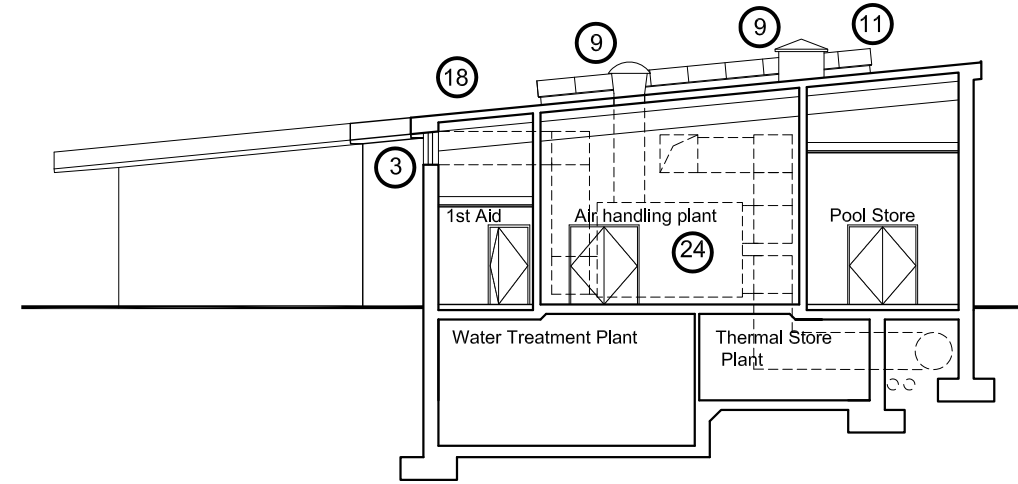


**KEY**

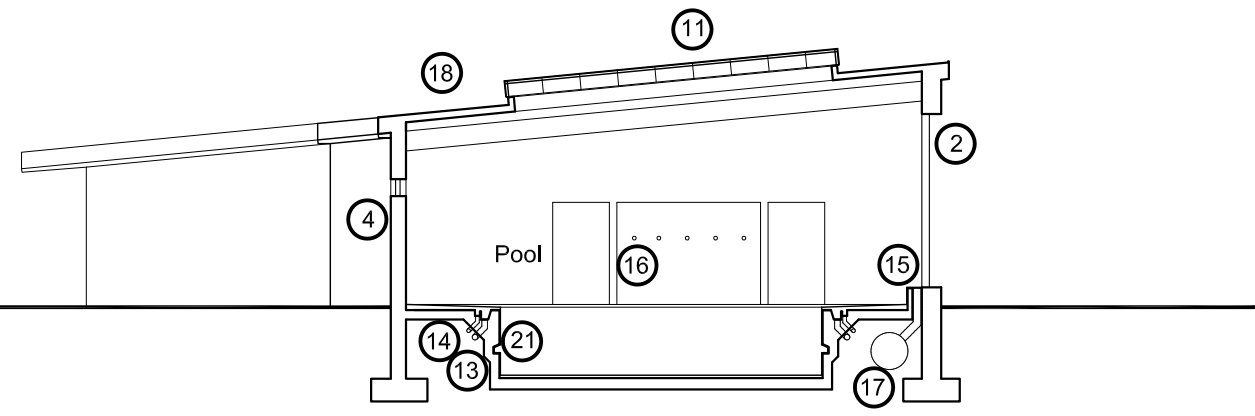
- ① External wall - outer leaf dependent on site conditions e.g facing brick, stone, render or rain screen system
- ② Aluminium curtain walling
- ③ External louvre panels
- ④ High level windows
- ⑤ Automatic entrance doors
- ⑥ Metal doors
- ⑦ Louvred doors
- ⑧ Building signage (possibly illuminated)
- ⑨ Roof cowl for exhaust air from plant equipment
- ⑩ Plant equipment flue to terminate 3m above roof level
- ⑪ Low rise barrelvault roof light
- ⑫ Sun tubes
- ⑬ Filtration pipework
- ⑭ Foul drainage from pool surround
- ⑮ Plinth seating
- ⑯ Pre-swim showers
- ⑰ Supply ductwork under pool surround
- ⑱ Roof finish dependent on site conditions e.g. standing seam or single ply systems
- ⑲ Easy steps to water
- ⑳ Recessed pool steps
- ㉑ Rest ledge
- ㉒ Balance tank
- ㉓ Internal glazed screen
- ㉔ Plant equipment



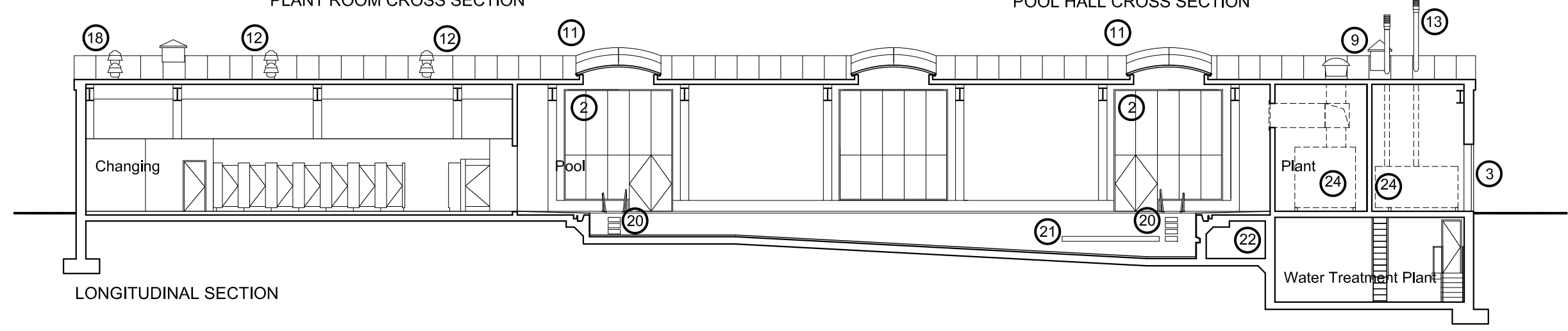
CHANGING ROOM CROSS SECTION



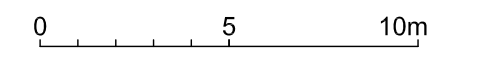
PLANT ROOM CROSS SECTION



POOL HALL CROSS SECTION



LONGITUDINAL SECTION



**4 lane pool Elevations**

**Scale: 1:200 @ A3**

**Notes:**  
This drawing is developed from Sport England's publication Affordable Community Swimming Pools and must be read in conjunction with the document.

DO NOT SCALE FROM THIS DRAWING

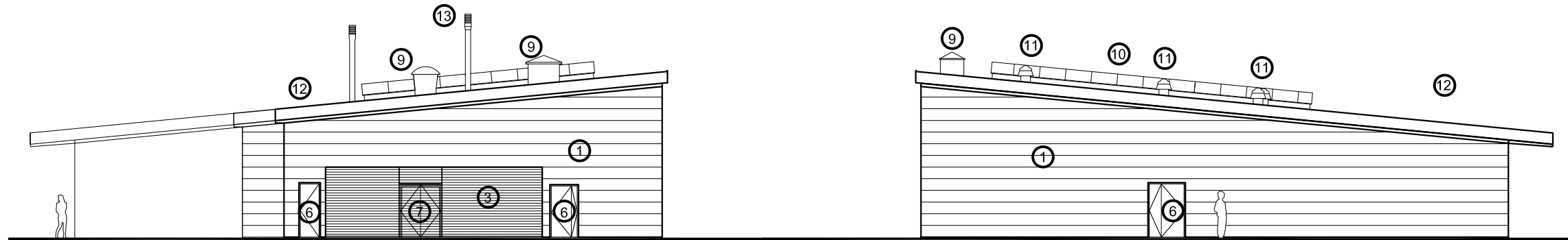
[Click here for "Design and Cost Guidance"](#)

[Click here for "User Guide"](#)



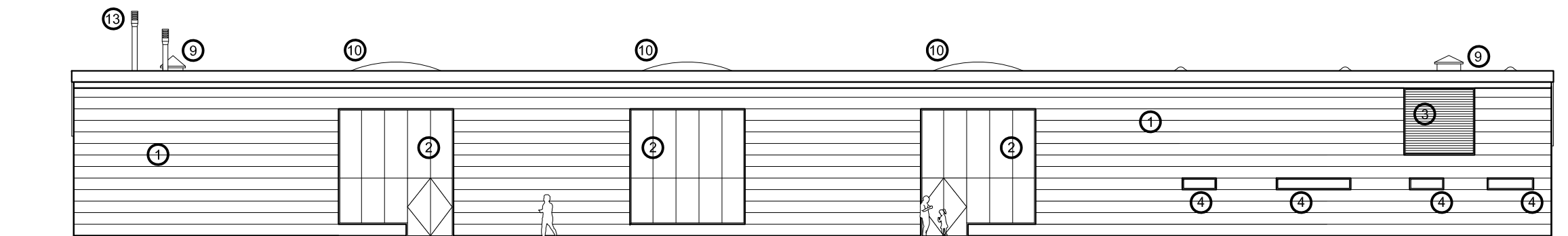
**KEY**

- |   |  |   |
|---|--|---|
| ① External wall - outer leaf dependant on site conditions e.g. facing brick, stone render or a rain screen system | ⑤ Automatic entrance doors                       | ⑩ Low rise barrelvault roof light   |
| ② Aluminium curtain walling   | ⑥ Metal doors                                    | ⑪ Sun tubes   |
| ③ External louvre panels  | ⑦ Louvred doors                                  | ⑫ Roof finish dependent on site conditions e.g. standing seam or single ply systems |
| ④ High level windows  | ⑧ Building signage (possibly illuminated)        | ⑬ Plant equipment flue to terminate 3m above roof level                             |
|   | ⑨ Roof cowl for exhaust air from plant equipment |   |

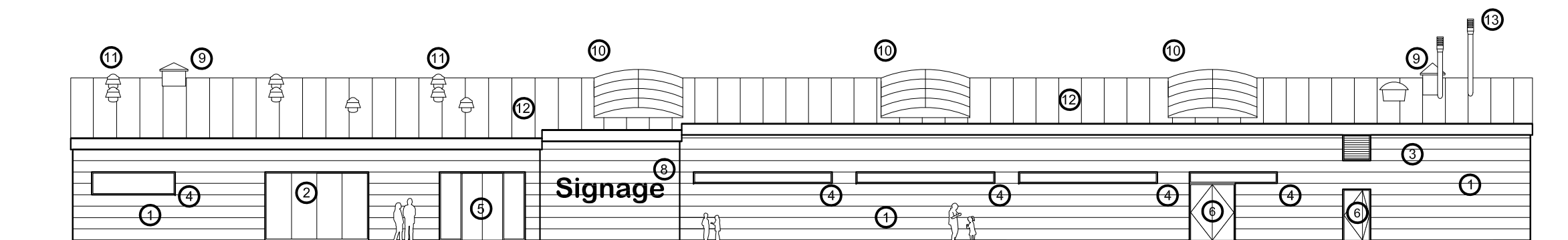


**EAST ELEVATION**

**WEST ELEVATION**



**NORTH ELEVATION**



**SOUTH ELEVATION**

