
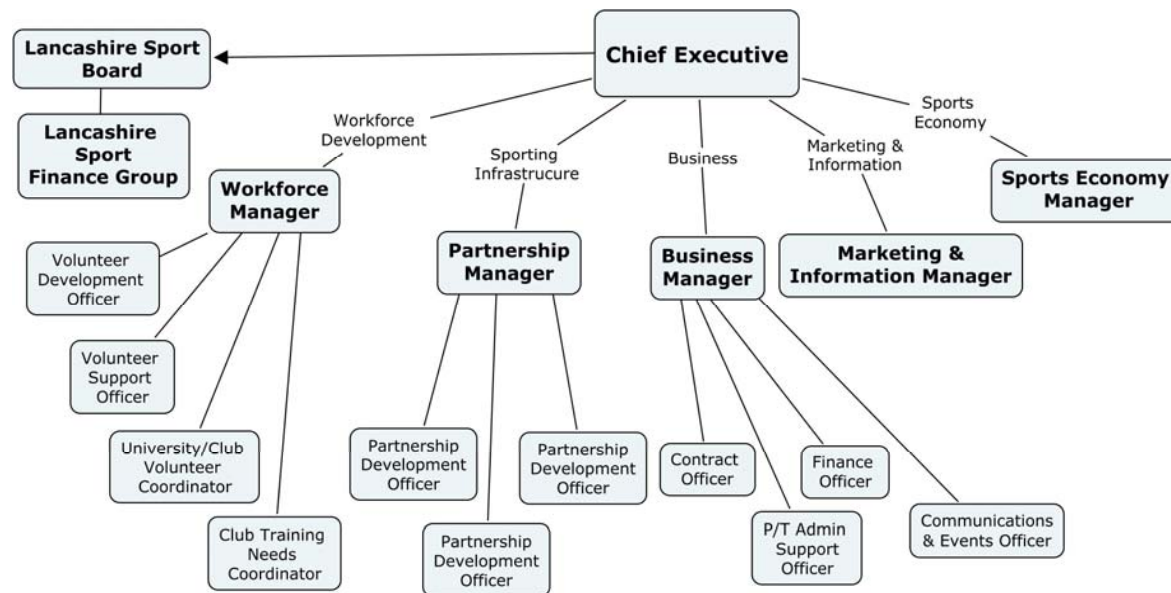


Lancashire Sport	
	Contact Lancashire Sport Partnership Myerscough College Bilsborrow Preston Lancashire PR3 0RY 01995 642340
Geography Lancashire, Blackburn with Darwen and Blackpool (1.4m Population)	
Local Authorities (15 Total, 1 County, 2 Unitaries, 12 Districts) Lancashire, Lancaster, Blackburn with Darwen, Blackpool, Preston, Ribble Valley, Pendle, Hyndburn, Burnley, Rossendale, Chorley, West Lancashire, South Ribble, Fylde and Wyre	SSPs (13 Total) Lancashire, Lancaster, Blackburn with Darwen, Blackpool, Preston, Ribble Valley & Hyndburn, Pendle, Burnley, Rossendale, Chorley, West Lancashire, South Ribble, Fylde and Wyre
LEAs (3 Total) Lancashire, Blackburn with Darwen, Blackpool	
Status Company Limited by Guarantee	
Chief Executive Adrian Leather 01995 642340 aleather@myerscough.ac.uk	First point of contact for NGBs: Jo Moss Director for Sport 01995 642236 jmoss@myerscough.ac.uk
BSF Wave Waves 1, 5 and 7 (5 District based phases currently in operation).	Stakeholder group established? YES (Various groups by Wave)
Communications Website: www.lancashiresport.org.uk Also – Annual report, ebulletin (by registered email address), Distribution networks and groups (by registered email address)	
NGB Forum/Network We facilitate an Active Lancashire County NGB Forum, with quarterly meetings and annual seminar / workshop event. The forum is linked with District based groups / SPAAs (CSNs) and also the Regional NGB forum. Regional NGB forum have 3 nominated NGB network leads.	
Extras Major focus on Workforce development and volunteering – 10 Club development Officers in post across the County, 4 Volunteer co ordinators working with HE / FE, NEETs etc – strong network of volunteer co ordinators / practice established. Sports Economy Officer has a role to establish 3 ‘Regionally significant’ Sports Villages and associated Mass participation events.	

Marketing and information capacity and specialism has been enhanced with improved analysis / best practice / targeting information etc.

Accommodation on offer

Current host and support a number of NGB staff – menu of costed options, hot desking available. Can also broker accom / line management / support across Local Authorities etc



Current Structure March 2009 – to be revised in 2009.

CSP Board

Trustee Directors – (From April 2009)

Partnership representation	Organisation	Name	Title	Interests
HE / FE	UCLAN	Graham Baldwin	Pro Vice Chancellor	Cycling, Rugby Union
Childrens Services	Blackburn w Darwen	Steve Rigby	Director	Athletics
Voluntary Sector	Princes Trust	Richard Marsh	Regional Director	Football
Local Authorities	Lancashire County Council	Richard Jones (Chair)	Asst Chief Executive	Cycling
	Lancaster City Council	David Owen	Head of Service	Diving, Watersports
	West Lancashire DC	John Nelson	Head of Service	Football
Constabulary	Lancs Constabulary Southern Division	Stuart Williams	Divisional Commander	Fell running, Rugby Union
NGBs (Nominated by Regional NGB Forum)	Squash & Racquet sports	John Gibson	Regional Officer	Squash
	Badminton	Vicky Foster Lloyd	Regional Manager	Badminton
	Rugby League	Matt Birkett	Regional Manager	Rugby League
PCTs	North Lancs PCT	Mike Leaf	Asst Director	Swimming
Private Sector	West Lancs Chamber of Commerce	Babs Murphy	Chief Executive	Tennis
	Lancashire Economic Partnership	Nick Briggs	Director	Football, Cricket
Myerscough College (Ex Officio)	Myerscough College	Ann Turner	Principal	Cricket
Sport England (Non voting)	SE NW region	Karen Keohane	Engagement Manager	Tennis
Local Authority (Non voting)	Lancashire County Council	Ian Watson	Head of Service	Cycling, Athletics
CSP Chief Exec (Non voting)	Lancashire Sport	Adrian Leather	Chief Executive	Cycling, Cricket

The Board meets quarterly.

