

Introduction

The following sports data sheets are for use in conjunction with Sport England's 'Developing the Right Sports Hall' (DRSH) main document. They relate to Step 5 'Establishing the Project Brief' and identify the needs of the priority sport and the key secondary sports.

These sheets show the requirements for Cricket as the 'Priority Sport' at club / community level of play and other 'Secondary Sports' that can fit into the same overall space. The 4 lane size and lighting are to ECB designated club / local club level requirements to also accommodate a range of other sports including a community level basketball court. The central spacing between lanes 2 and 3 is set at the minimum 3.4 m for ceiling mounted drop down basketball goals (as per ECB recommendations). This allows for improved space for safe practice or padding up over the narrower 2.0 m central spacing that can be achieved using alternative wall hinged basketball goals.

	Level of Play			
New Level of Play Category ¹	International	Premier	Club	Community
	This category relates to the lowest level of International play ²	This category relates a Premier / National League Club competing in regional or Inter county competitions	This category relates to a local club competing in District and County League competitions	This category relates to school and community use where there is no formal competitive structure / no specific need for space for officials or spectator accommodation
Indoor Cricket equivalent ³	N/A	N/A	Club	Educational

Commentary

The sports data sheets use the NGB's requirements for the field of play. Spectators zones for match play are not included and are assumed to be a site specific requirement. For further details of the requirements for indoor cricket see the England and Wales Cricket Board (ECB) website <http://www.ecb.co.uk> and the TS3 download 'Indoor Sports Halls with Cricket Provision'. For further details of the requirements for 'secondary sports', see Appendix 8 of the main DRSH document for links to other NGB's websites.

¹ New level of play categories for each sport as agreed by the NGBs and Sport England and applicable throughout this document.

² For higher levels of international competition, such as major championships, the relevant NGB should be consulted at a very early stage as the requirements vary considerably.

³ For other sports, see Appendix 4 'Level of play categories for each sport' within main document.

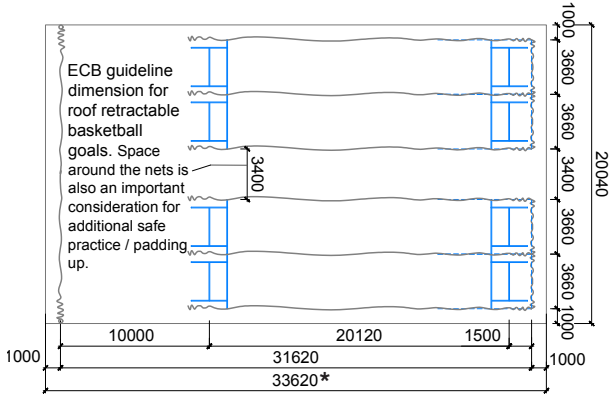


Key Issues

- **Spatial requirements:** Overall length is to ECB's recommended optimum of 33.62 m. Overall width is based on including a minimum 3.4 m central clear zone for ceiling mounted retractable basketball goals (see ECB recommendations) and for safe padding up / practice and minimum side margins. Height is based on ECB's lower limit guide height range of 7.7 - 9.2 m clear, to accommodate overhead netting at minimum 5.0 m above floor level. Access and means of escape into and out of the hall require careful consideration.
- **Flooring:** To ensure surfaces with playing and durability characteristics required by cricket are installed, the ECB has developed a *Performance Standard for Indoor Cricket Surfaces* based on *BS EN 14904 Surfaces for sports areas - Indoor surfaces for multi-sports use - Specification*, but includes properties specifically required by the game of cricket.
- **Walls / netting:** Minimum 1.0 m 'net to sidewall' margins are based on there being no projecting features. Netting tracks require careful consideration / co-ordination with wall obstructions and basketball goals to achieve ECB minimum clearance requirements.
- **Lighting:** In multi-purpose sports halls, lighting should use fluorescent light fittings with multiple lamps which reduce glare and maintain uniformity at different illumination levels, with lines of fittings running alongside each wicket and fixed to the structure.

Note: For further details see ECB website and Sport England's design guidance notes 'Floors for Indoor Sports' and 'Artificial Sports Lighting'.

Primary Sport

Indoor Cricket				Source of information:		http://www.ecb.co.uk 'Indoor Sports Halls with Cricket Provision' TS3 download http://www.sportengland.org/facilities_planning/design_and_cost_guidance.aspx											
Community / Club (4 Lanes)				Overall space (m) incl. R/O * 33.62 x 20.04 x 7.70													
 <p>ECB guideline dimension for roof retractable basketball goals. Space around the nets is also an important consideration for additional safe practice / padding up.</p>				L x W x H			Lane Size (m)			Run offs (m)			Additional areas (m)		Specification		
				Length	Width	Height	R/O			T/O	S/S	Flooring	Lighting				
							Ends (See notes on page 3)	Sides (See notes on page 3)	Between lanes or courts / Between lanes or courts with a dividing net					Space for teams (T) and match officials (O)	Spectator seating		
			33.62 *				31.62	3.66	7.70 min (to give 5.00 clear under net)	1.00	1.00	0 / 3.40 for basketball goals	-	-	Mats req/d (ECB Club & Educational Standard)	750 lux 0.8 Emin / eav	
Secondary Sports																	
Sport	Number	Compliance	Level														
Badminton	4 court format	✓	Club	31.90 17.40 7.50	13.40	6.10	7.50	2.00	2.00	1.50 / 2.60	-	-	Combined, area or mixed	Lower (500 lux)			
Basketball	1 court format	✓	Community	32.10 19.10 7.00	28.00	15.00	7.00	2.05	2.05	4.00 / 4.00	-	-	Semi-sprung wooden or synthetic	Lower (500 lux)			
Netball	0 court format	✗	-	34.50 18.25 7.50	30.50	15.25	7.50	2.00	1.50	3.00 / 3.00	1.75	-	Any meeting AENA standards	Same (750 lux)			
Volleyball	1 court format (lengthways)	✓	Premier	28.00 17.00 7.50	18.00	9.00	7.50	5.00	3.00	6.00 / 6.00	2.00	-	Area elastic	Lower (500 lux)			
Volleyball Training	2 court format (transverse)	✓	Training	30.00 20.00 7.50	18.00	9.00	7.50	1.00	3.00	6.00 / 6.00	N/A	N/A	Area elastic	Lower (500 lux)			
Basketball Training	Rings on side walls	✗	Training	-													

* A preferred overall length of 33.62 m has been used for comparison within these sheets. Where space is restricted, the ECB may accept a reduced overall length down to 31.2 m on a project by project basis.

Primary Sport / Secondary Sport Issues

Indoor Cricket (cont/d)

Notes of key issues for Community /Club level Indoor Cricket

- Hatched areas indicate space which is excess to secondary sport requirements. In some cases, this can provide improved circulation and space for spectators and wheelchair users.
- Where space is restricted, the ECB may accept a reduced overall length down to 31.2 m subject to agreement on a project by project basis. Reductions in length may only be made and calculated from the run up end.
- Space around the nets is an important consideration. For instance, 2 bays with adequate space around for additional safe practice / padding up can be preferable to 4 bays with insufficient space for safe padding up and other practice.
- A roll out mat found to be suitable on one type of sports hall will not necessarily provide satisfactory performance on a different

type of sports hall floor. Secondary sports floor requirements / cricket mat combinations to be coordinated for compatibility for cricket / meet ECB requirements.

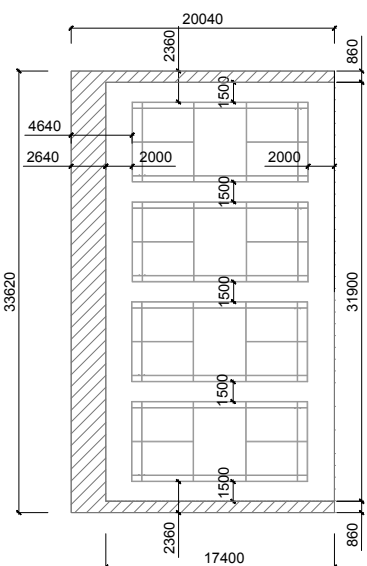
- 'Net to wall' side margins are to be at least 1.0 m from adjacent walls up to a height of approximately 2.0 m. Above this height, margins are to be not less than 0.5 m from eg. basketball goal hoops, to reduce the risk of balls striking equipment.
- Lighting: uniformity ratio (0.8) = Emin / eav.
- Clear height and lighting requirements for badminton to be carefully considered regarding tracking for nets / switching.
- The offset of the main basketball goals from end walls requires careful consideration / co-ordination with netting tracks. Check with equipment manufacturer before finalising hall dimensions.

- Two transverse volleyball training courts with reduced run offs can be accommodated. However, basketball practice courts cannot be integrated unless the 'net to wall' side margins are increased and overall hall dimensions increased accordingly. See following note.
- Practice basketball goals (not included) project varying distances depending on whether they are fixed or hinged. When closed, hinged models project approximately 0.9 m (check with equipment manufacturer before finalising dimensions). Therefore to achieve a 0.5 m clearance, 'net to sidewall' margin increases to say min 1.4 m. 'Net to sidewall' margins can be reduced to a min 1.0 m where basketball goals are not present.

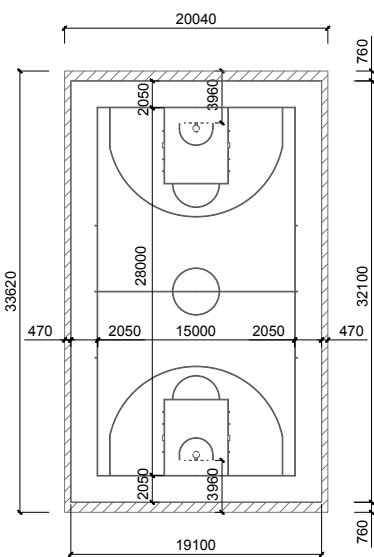
Secondary Sports

Layouts for other sports within a 4 lane indoor cricket space of 33.62 x 20.04 x 7.70 m

Badminton (Club)



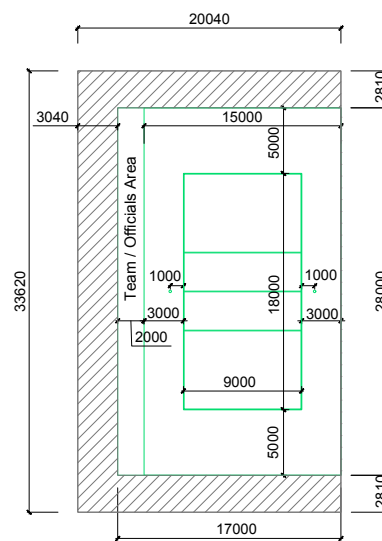
Basketball (Community)



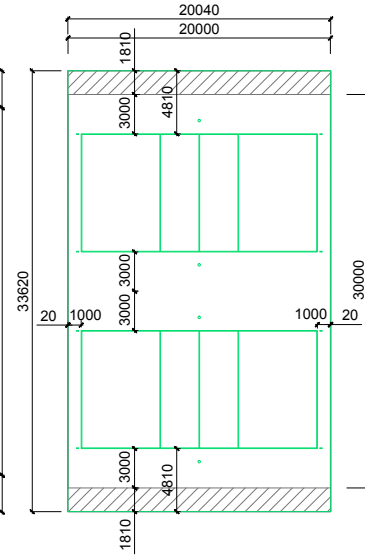
Netball (Community)

- cannot be accommodated in a 4 lane indoor cricket space, unless it is made longer

Volleyball (Premier)



Volleyball (Training)



Basketball Training

- cannot be accommodated in a 4 lane indoor cricket space, unless it is made wider - see notes above