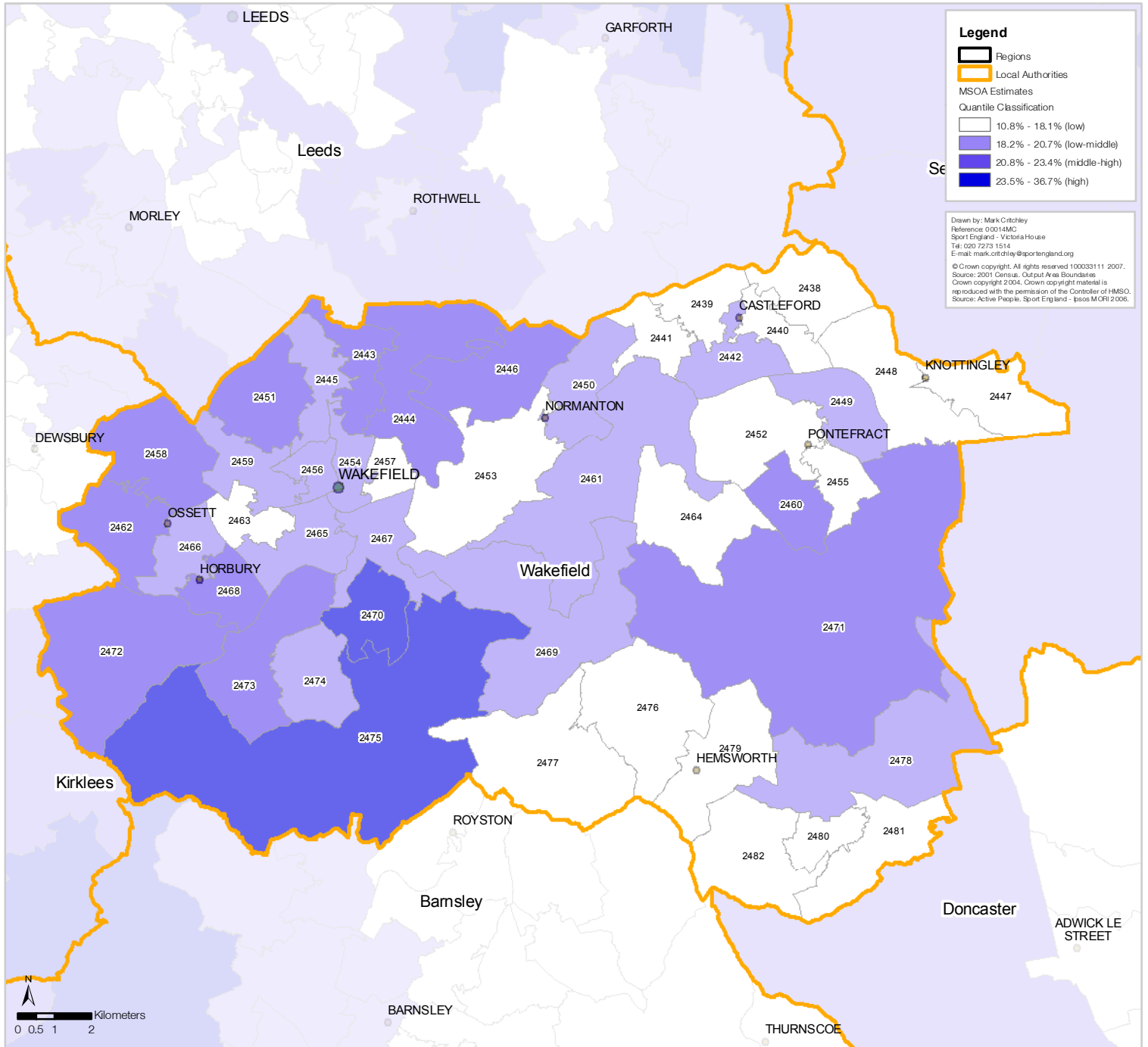


### Wakefield Metropolitan District Council Participation (3 x 30) Estimates by Middle Super Output Area (MSOA)



*MSOA Code	Estimate	Lower **CL	Upper **CL	*MSOA Code	Estimate	Lower **CL	Upper **CL
E02002438	15.07%	11.14%	19.92%	E02002463	16.37%	12.22%	21.43%
E02002439	16.17%	11.86%	21.48%	E02002464	16.06%	12.07%	20.89%
E02002440	17.47%	12.98%	22.92%	E02002465	19.83%	14.71%	25.96%
E02002441	16.11%	12.18%	20.86%	E02002466	20.44%	15.60%	26.09%
E02002442	18.58%	14.08%	23.93%	E02002467	19.63%	14.86%	25.29%
E02002443	22.60%	16.58%	29.77%	E02002468	22.52%	16.77%	29.30%
E02002444	21.01%	15.90%	27.00%	E02002469	20.58%	15.50%	26.56%
E02002445	19.59%	14.70%	25.40%	E02002470	27.50%	21.25%	34.49%
E02002446	21.63%	16.02%	28.31%	E02002471	22.87%	17.69%	28.78%
E02002447	15.77%	11.98%	20.33%	E02002472	22.37%	17.08%	28.50%
E02002448	15.68%	11.78%	20.41%	E02002473	22.77%	17.21%	29.23%
E02002449	19.31%	14.75%	24.66%	E02002474	18.76%	14.06%	24.37%
E02002450	19.55%	14.71%	25.31%	E02002475	24.51%	18.30%	31.72%
E02002451	22.29%	16.75%	28.77%	E02002476	15.80%	11.81%	20.66%
E02002452	17.84%	13.26%	23.39%	E02002477	17.36%	13.14%	22.40%
E02002453	17.87%	13.47%	23.15%	E02002478	18.76%	13.85%	24.71%
E02002454	19.05%	13.93%	25.29%	E02002479	17.37%	13.19%	22.35%
E02002455	15.78%	11.58%	20.98%	E02002480	17.34%	12.96%	22.66%
E02002456	20.42%	15.10%	26.80%	E02002481	17.55%	13.24%	22.72%
E02002457	17.86%	13.18%	23.57%	E02002482	17.45%	13.18%	22.57%
E02002458	20.82%	15.72%	26.81%				
E02002459	18.90%	14.23%	24.46%				
E02002460	22.38%	17.01%	28.62%				
E02002461	18.23%	13.80%	23.50%				
E02002462	20.77%	15.86%	26.49%				

\*Add E0200 to MSOA map label to reference correct code in table.  
 \*\* Confidence Level

Participation is defined as the percent of the adult population participating in at least 30 minutes of sport and active recreation (including recreational walking and cycling) of at least moderate intensity on at least 3 days a week.