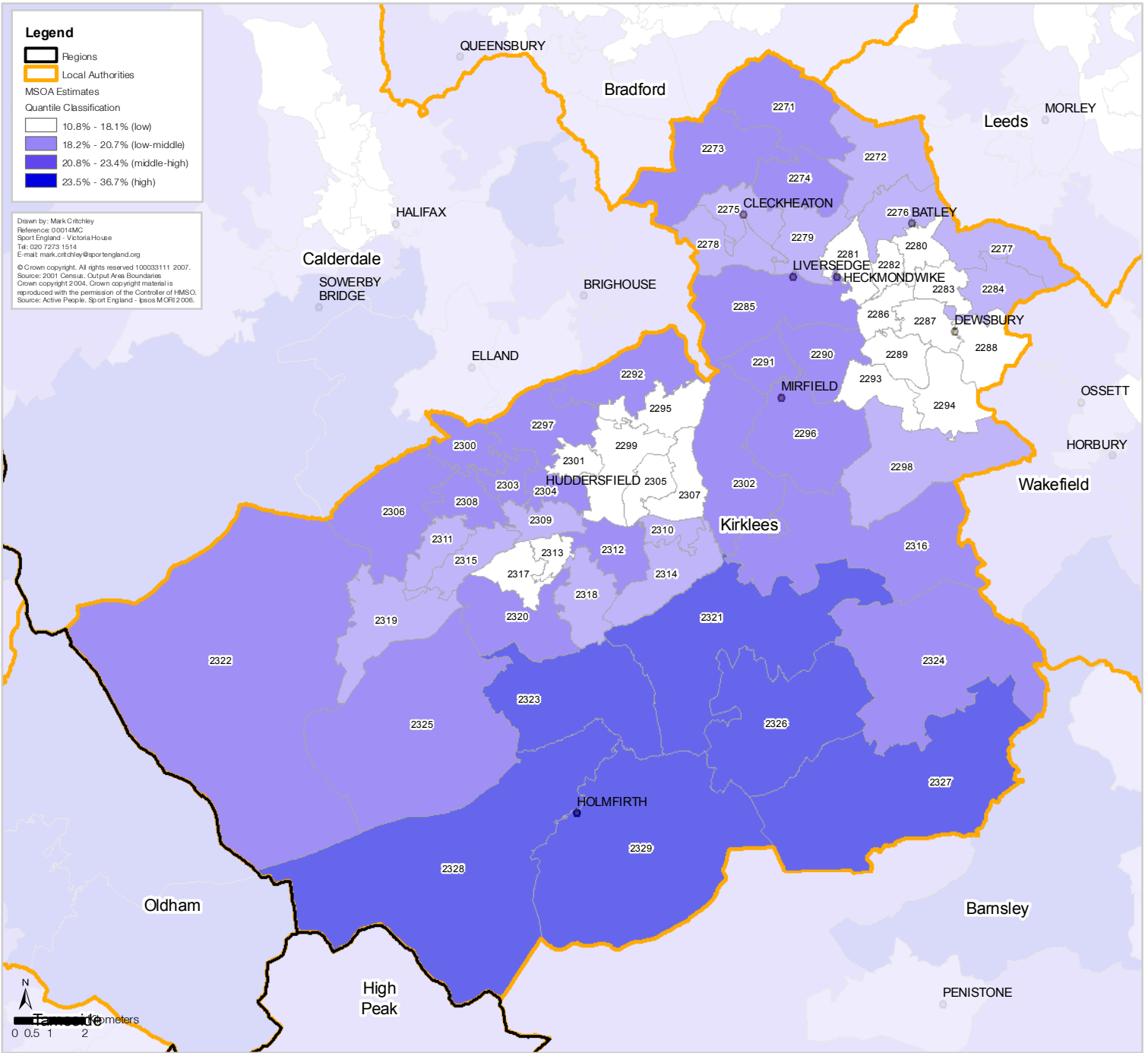


Kirklees Metropolitan District Council Participation (3 x 30) Estimates by Middle Super Output Area (MSOA)


*MSOA Code	Estimate	Lower **CL	Upper **CL	*MSOA Code	Estimate	Lower **CL	Upper **CL	*MSOA Code	Estimate	Lower **CL	Upper **CL
E02002271	22.05%	16.73%	28.48%	E02002296	21.93%	15.77%	29.65%	E02002321	25.69%	18.55%	34.41%
E02002272	19.06%	14.52%	24.62%	E02002297	22.30%	16.61%	29.26%	E02002322	21.01%	15.55%	27.76%
E02002273	20.80%	15.75%	26.95%	E02002298	18.69%	13.96%	24.55%	E02002323	23.44%	17.99%	29.93%
E02002274	21.64%	16.03%	28.56%	E02002299	16.37%	12.12%	21.74%	E02002324	22.02%	16.86%	28.23%
E02002275	19.00%	14.35%	24.72%	E02002300	21.70%	16.38%	28.18%	E02002325	21.67%	16.19%	28.37%
E02002276	19.47%	14.64%	25.41%	E02002301	17.46%	12.98%	23.06%	E02002326	25.67%	19.83%	32.54%
E02002277	18.11%	13.69%	23.58%	E02002302	22.25%	16.99%	28.58%	E02002327	23.58%	18.02%	30.23%
E02002278	20.05%	15.20%	25.98%	E02002303	21.28%	15.75%	28.10%	E02002328	24.28%	18.61%	31.02%
E02002279	18.59%	13.78%	24.59%	E02002304	22.19%	16.12%	29.74%	E02002329	24.21%	18.83%	30.55%
E02002280	14.01%	9.98%	19.33%	E02002305	16.72%	12.56%	21.91%				
E02002281	17.10%	12.91%	22.31%	E02002306	23.00%	16.97%	30.39%				
E02002282	16.44%	11.99%	22.12%	E02002307	18.05%	13.43%	23.82%				
E02002283	13.72%	9.95%	18.63%	E02002308	20.97%	15.65%	27.50%				
E02002284	20.13%	15.15%	26.23%	E02002309	18.50%	13.81%	24.32%				
E02002285	21.37%	16.02%	27.91%	E02002310	18.39%	13.42%	24.67%				
E02002286	17.99%	13.20%	24.02%	E02002311	20.23%	14.96%	26.77%				
E02002287	17.61%	12.75%	23.80%	E02002312	21.17%	15.36%	28.43%				
E02002288	17.43%	13.16%	22.72%	E02002313	15.45%	11.43%	20.55%				
E02002289	15.47%	11.45%	20.58%	E02002314	20.48%	15.42%	26.67%				
E02002290	21.47%	16.10%	28.04%	E02002315	19.82%	14.87%	25.91%				
E02002291	21.33%	15.60%	28.45%	E02002316	21.11%	15.87%	27.51%				
E02002292	21.39%	15.75%	28.38%	E02002317	17.47%	12.94%	23.16%				
E02002293	14.15%	10.28%	19.24%	E02002318	18.83%	13.90%	24.99%				
E02002294	14.34%	10.67%	19.00%	E02002319	20.49%	15.62%	26.40%				
E02002295	15.23%	11.40%	20.06%	E02002320	21.95%	16.61%	28.42%				

*Add E0200 to MSAO map label to reference correct code in table.

** Confidence Level

Participation is defined as the percent of the adult population participating in at least 30 minutes of sport and active recreation (including recreational walking and cycling) of at least moderate intensity on at least 3 days a week.