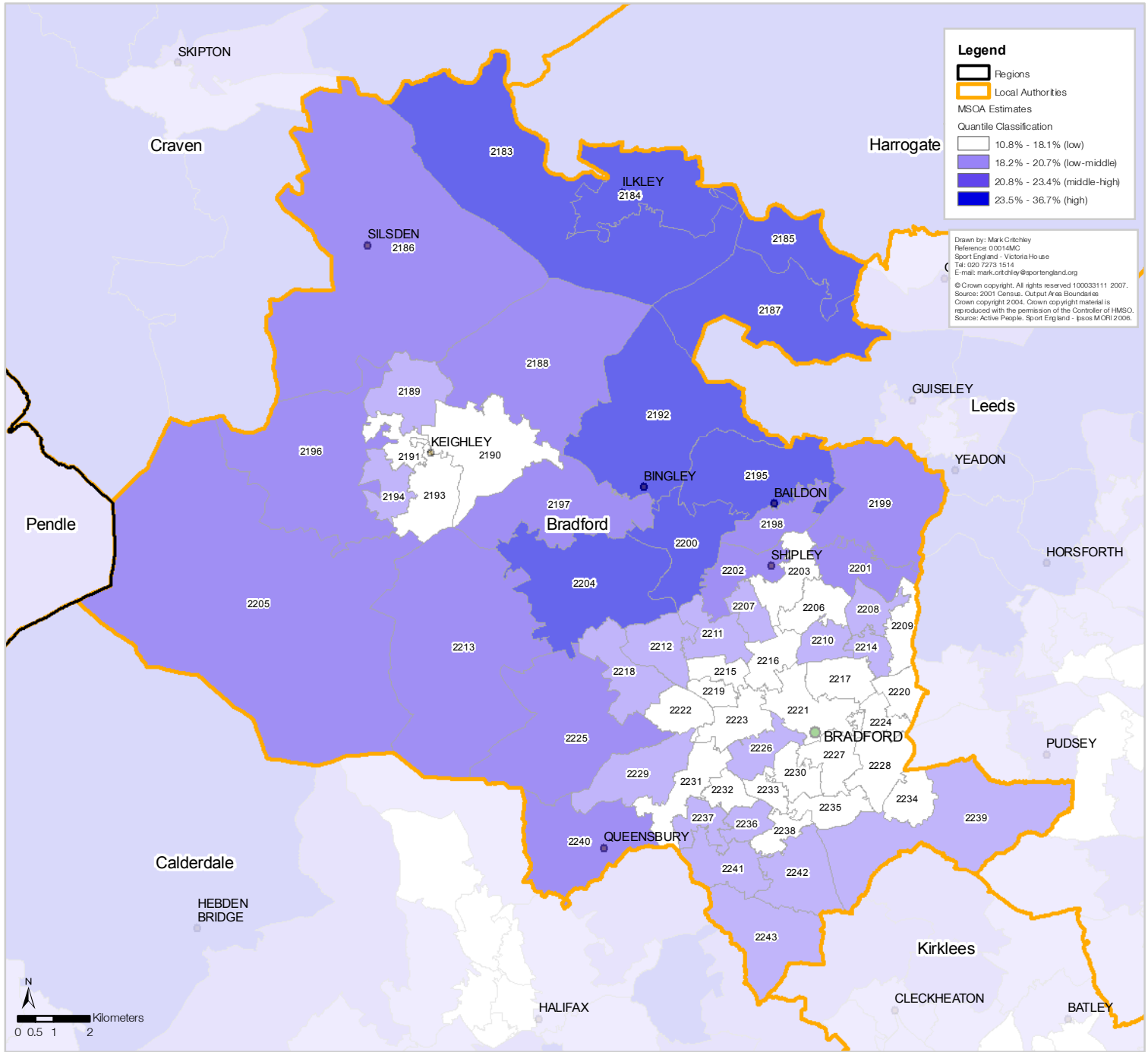


**Bradford Metropolitan District Council Participation (3 x 30) Estimates by Middle Super Output Area (MSOA)**



**Legend**

- Regions
- Local Authorities

MSOA Estimates  
Quantile Classification

- 10.8% - 18.1% (low)
- 18.2% - 20.7% (low-middle)
- 20.8% - 23.4% (middle-high)
- 23.5% - 36.7% (high)

Drawn by: Mark Critchley  
Reference: 00014MG  
Sport England - Victoria House  
Tel: 020 7275 1514  
E-mail: mark.critchley@sportengland.org

© Crown copyright. All rights reserved 100033111 2007.  
Source: 2001 Census - Output Area Boundaries  
Crown copyright 2004. Crown copyright material is reproduced with the permission of the Controller of HMSO.  
Source: Active People, Sport England - Ipsos MORI 2006.

*MSOA Code	Estimate	Lower **CL	Upper **CL	*MSOA Code	Estimate	Lower **CL	Upper **CL	*MSOA Code	Estimate	Lower **CL	Upper **CL
E02002163	25.96%	19.54%	33.61%	E02002208	18.08%	13.45%	23.85%	E02002233	14.04%	10.24%	18.95%
E02002164	26.15%	20.29%	32.99%	E02002209	16.19%	11.63%	22.09%	E02002234	15.10%	10.60%	21.06%
E02002185	26.77%	20.69%	33.86%	E02002210	18.29%	13.25%	24.70%	E02002235	15.45%	9.30%	24.55%
E02002186	23.17%	17.91%	29.43%	E02002211	20.04%	15.09%	26.12%	E02002236	19.77%	14.74%	26.00%
E02002187	27.32%	20.30%	35.68%	E02002212	18.94%	13.44%	26.00%	E02002237	18.51%	13.51%	24.83%
E02002188	22.07%	16.84%	28.36%	E02002213	21.73%	16.48%	28.09%	E02002238	17.68%	13.10%	23.42%
E02002189	19.19%	14.17%	25.45%	E02002214	19.69%	14.48%	26.22%	E02002239	18.34%	13.60%	24.27%
E02002190	15.55%	11.69%	20.39%	E02002215	13.97%	10.13%	18.97%	E02002240	22.28%	16.78%	28.95%
E02002191	16.10%	11.91%	21.39%	E02002216	13.52%	9.96%	18.09%	E02002241	18.19%	13.86%	23.49%
E02002192	25.73%	19.56%	33.05%	E02002217	15.93%	11.32%	21.95%	E02002242	19.18%	14.46%	25.00%
E02002193	16.68%	11.98%	22.74%	E02002218	19.93%	14.73%	26.39%	E02002243	18.83%	14.11%	24.68%
E02002194	18.33%	13.02%	25.19%	E02002219	14.30%	10.28%	19.54%				
E02002195	25.23%	18.97%	32.74%	E02002220	13.26%	9.54%	18.13%				
E02002196	22.39%	17.00%	28.90%	E02002221	13.26%	9.46%	18.30%				
E02002197	22.91%	17.32%	29.66%	E02002222	17.69%	12.39%	24.63%				
E02002198	21.47%	16.27%	27.77%	E02002223	14.29%	10.53%	19.11%				
E02002199	23.27%	17.18%	30.73%	E02002224	12.55%	9.10%	17.05%				
E02002200	24.13%	18.58%	30.72%	E02002225	21.35%	16.21%	27.58%				
E02002201	21.44%	16.37%	27.56%	E02002226	18.32%	13.52%	24.34%				
E02002202	21.38%	16.24%	27.62%	E02002227	14.44%	9.98%	20.46%				
E02002203	17.05%	12.79%	22.37%	E02002228	15.23%	11.03%	20.65%				
E02002204	23.98%	18.62%	30.33%	E02002229	19.73%	14.85%	25.74%				
E02002205	22.55%	17.46%	28.61%	E02002230	15.76%	11.56%	21.13%				
E02002206	18.05%	13.32%	24.00%	E02002231	17.29%	12.90%	22.78%				
E02002207	18.26%	13.33%	24.51%	E02002232	17.59%	12.91%	23.50%				

\*Add E0200 to MSAO map label to reference correct code in table.  
\*\* Confidence Level

Participation is defined as the percent of the adult population participating in at least 30 minutes of sport and active recreation (including recreational walking and cycling) of at least moderate intensity on at least 3 days a week.