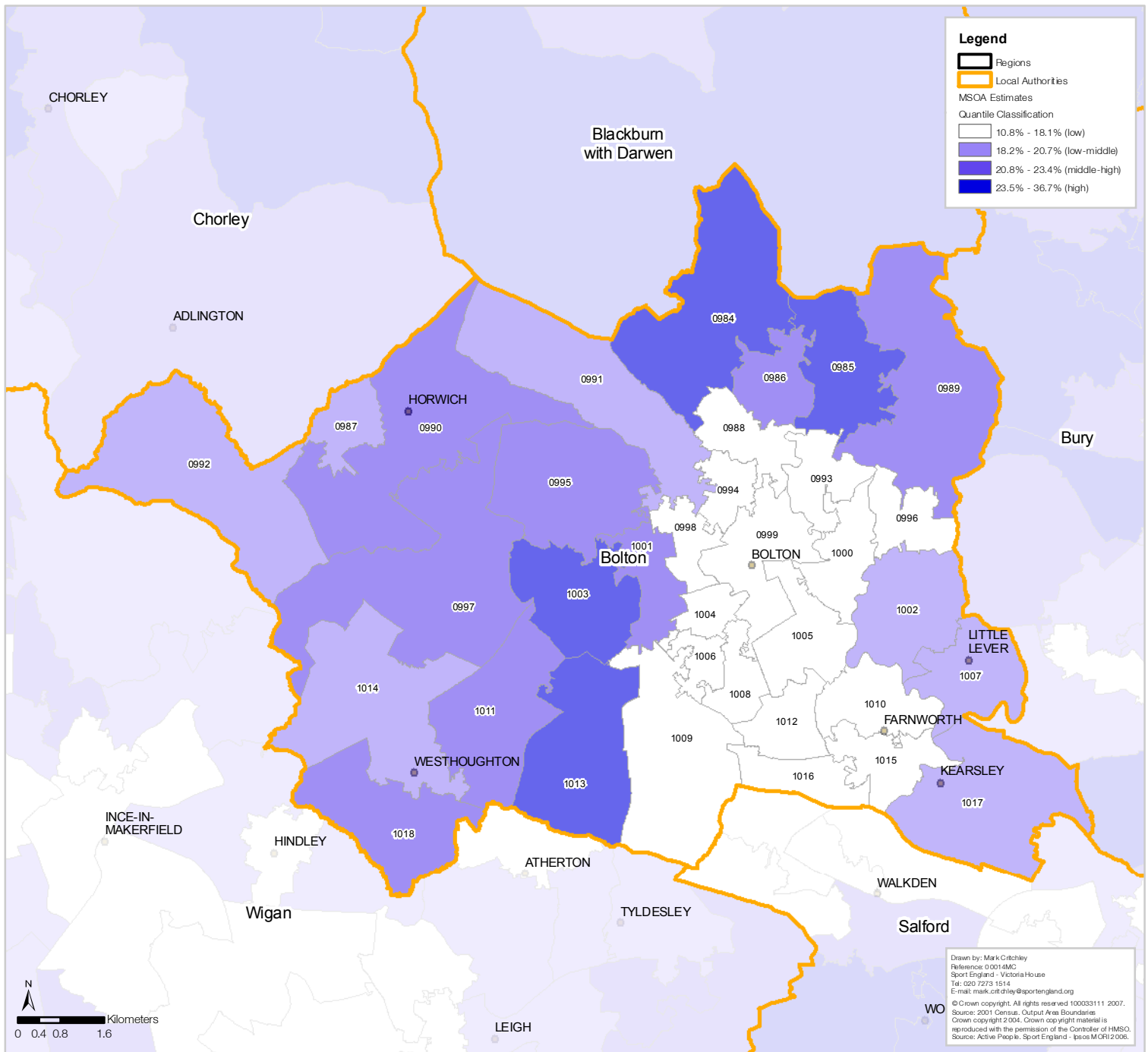


Bolton District Council Participation (3 x 30) Estimates by Middle Super Output Area (MSOA)



*MSOA Code	Estimate	Lower **CL	Upper **CL	*MSOA Code	Estimate	Lower **CL	Upper **CL
E02000984	26.80%	20.79%	33.63%	E02001009	17.03%	12.93%	22.21%
E02000985	24.81%	19.17%	31.26%	E02001010	17.22%	13.08%	22.45%
E02000986	22.01%	17.05%	28.12%	E02001011	23.33%	18.13%	29.70%
E02000987	19.62%	14.94%	25.49%	E02001012	17.71%	13.56%	22.92%
E02000988	17.58%	13.49%	22.73%	E02001013	23.58%	17.87%	30.65%
E02000989	22.76%	17.50%	29.27%	E02001014	19.07%	14.68%	24.54%
E02000990	22.33%	17.10%	28.83%	E02001015	17.19%	13.16%	22.25%
E02000991	19.90%	15.48%	25.37%	E02001016	16.64%	12.71%	21.58%
E02000992	20.64%	15.93%	26.48%	E02001017	18.98%	14.66%	24.35%
E02000993	15.76%	11.90%	20.66%	E02001018	23.23%	18.07%	29.57%
E02000994	14.57%	10.97%	19.18%				
E02000995	21.13%	16.46%	26.87%				
E02000996	16.89%	12.87%	21.95%				
E02000997	22.56%	17.58%	28.67%				
E02000998	16.34%	12.49%	21.20%				
E02000999	14.76%	11.01%	19.58%				
E02001000	17.65%	13.44%	22.97%				
E02001001	21.25%	16.44%	27.20%				
E02001002	19.18%	14.73%	24.74%				
E02001003	24.94%	19.37%	31.73%				
E02001004	13.81%	10.39%	18.20%				
E02001005	16.09%	12.16%	21.09%				
E02001006	15.07%	11.35%	19.82%				
E02001007	18.91%	14.62%	24.24%				
E02001008	14.36%	10.93%	18.70%				

*Add E0200 to MSAO map label to reference correct code in table.
 ** Confidence Level

Participation is defined as the percent of the adult population participating in at least 30 minutes of sport and active recreation (including recreational walking and cycling) of at least moderate intensity on at least 3 days a week.

Drawn by: Mark Critchley
 Reference: 00014MC
 Sport England - Victoria House
 Tel: 020 7273 1514
 E-mail: mark.critchley@sportengland.org
 © Crown copyright. All rights reserved 100033111 2007.
 Source: 2001 Census. Output Area Boundaries
 Crown copyright 2004. Crown copyright material is reproduced with the permission of the Controller of HMSO.
 Source: Active People. Sport England - Ipsos MORI 2006.